

# PUBLIC MEETING NOTIFICATION

## **Notice:**

Notification is being provided in advance of a Site Plan Application to the City of Bend for a roughly 42,000 square foot two-story athletic facility and associated site improvements in the CL Zone and Discovery West Overlay Zone (Commercial/Mixed Employment District). In addition to the building, the plan includes parking areas, outdoor use areas, space for 3 food trucks, and access via an alley to the north. This meeting is an informational and it is being held prior to the submittal of an application. The meeting will be held in conformance with Section 4.1.215 of the Bend Development Code.

## **Time, Date, and Location of Meeting:**

The meeting will be held on **Wednesday, June 12, 2024 at 6:00 pm**. The meeting will be held on-line via ZOOM. To participate:

- Before the scheduled meeting date, ensure that you can access the Zoom on your computer, tablet, or smart phone (for issues refer to [www.zoom.us](http://www.zoom.us)).
- To participate in the meeting at the scheduled time, type the following link into your web browser.

<https://us06web.zoom.us/j/89155496244>

- You can also participate on via telephone by calling into (253) 215 8782 / Meeting ID: 891 5549 6244, however you will need to be on-line to view the visual presentation.

## **Location:**

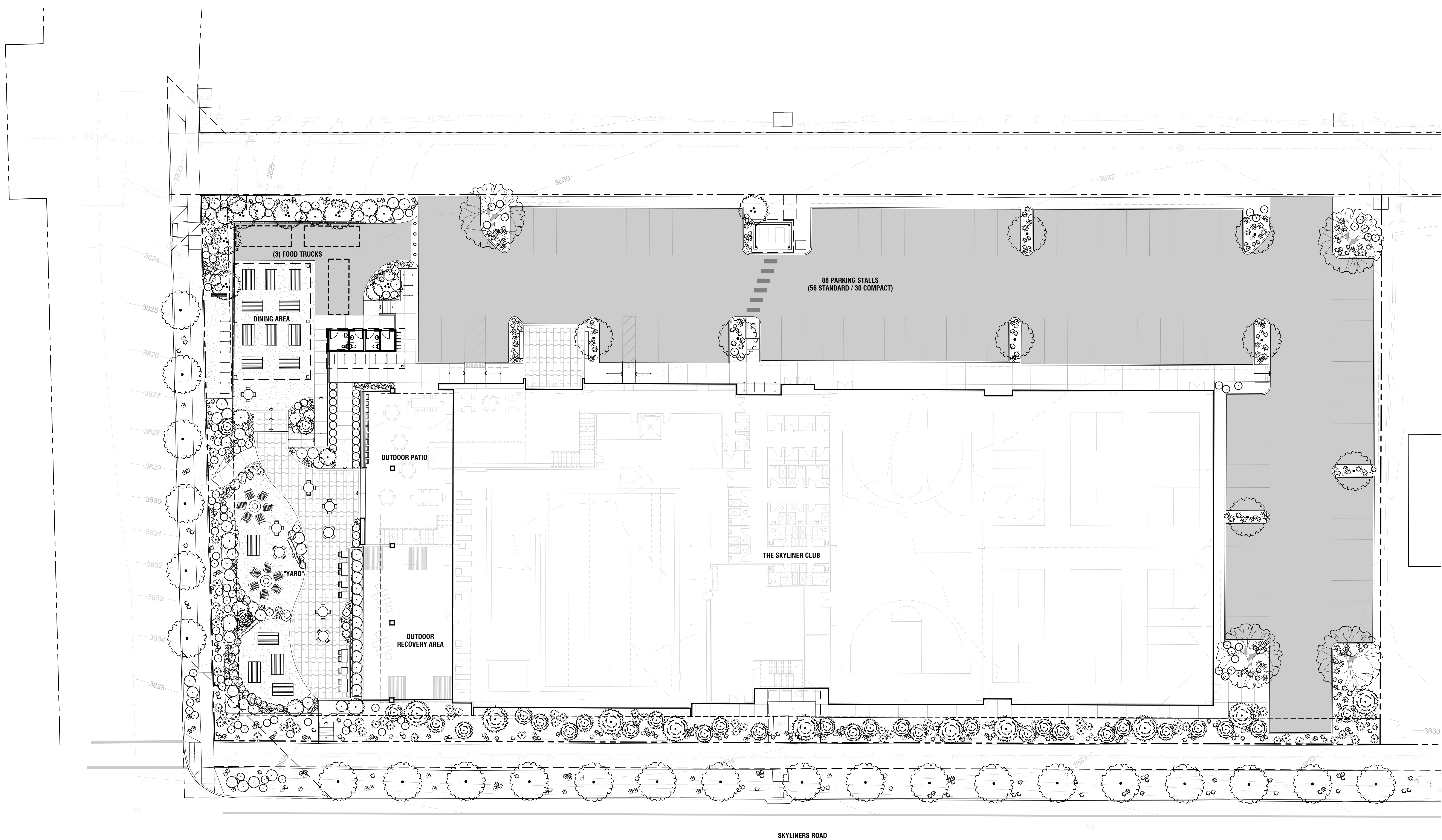
The property is located on the north side of Skyliners Road, west of NW Crosby. It has not been assigned an address and is identified as 171135DC02100 and 171135DC02200 by the Deschutes County Tax Assessor.



## **Contact Info:**

Blackmore Planning and Development Services, LLC – [greg@blackmoreplanning.com](mailto:greg@blackmoreplanning.com)





1 SITE PLAN

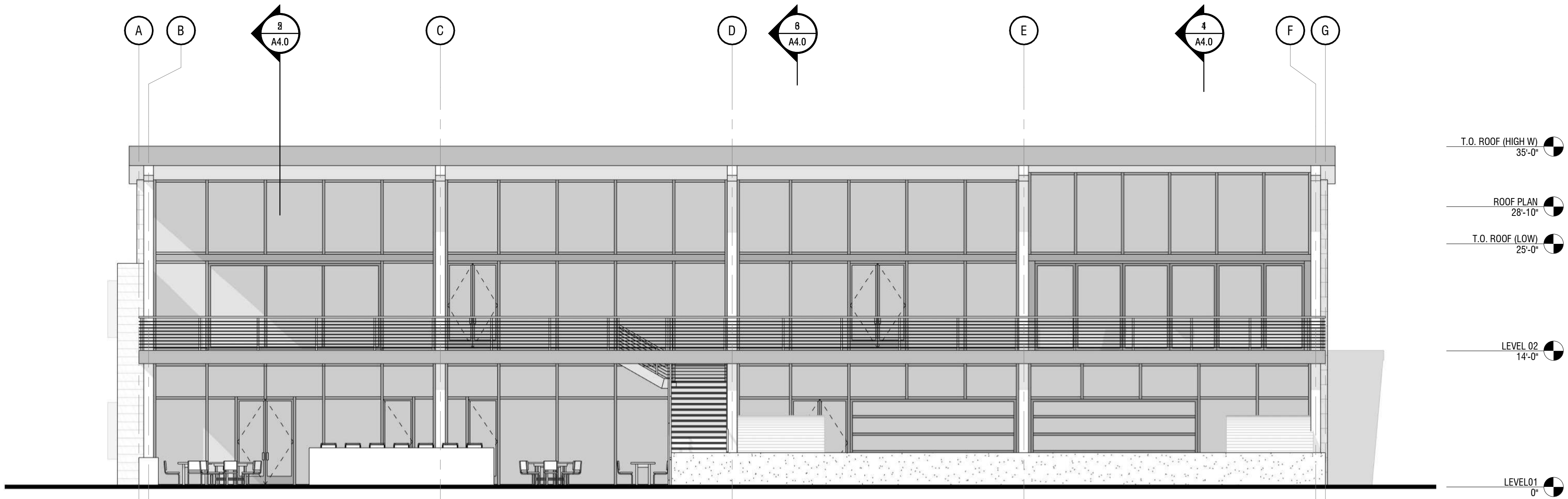
- ARCHITECTURAL SITE PLAN LEGEND**
- (E) PROPERTY LINE
  - FLOW → DIRECTION OF FLOW
  - W — W — WATER LINE
  - SS — SANITARY SEWER LINE
  - GAS — GAS LINE
  - E — ELECTRICAL LINE

DRWN BY:	JD	
CHKD BY:	HS	
NO.	DATE	SUBMITTAL
1	5.23.2024	PUBLIC MEETING

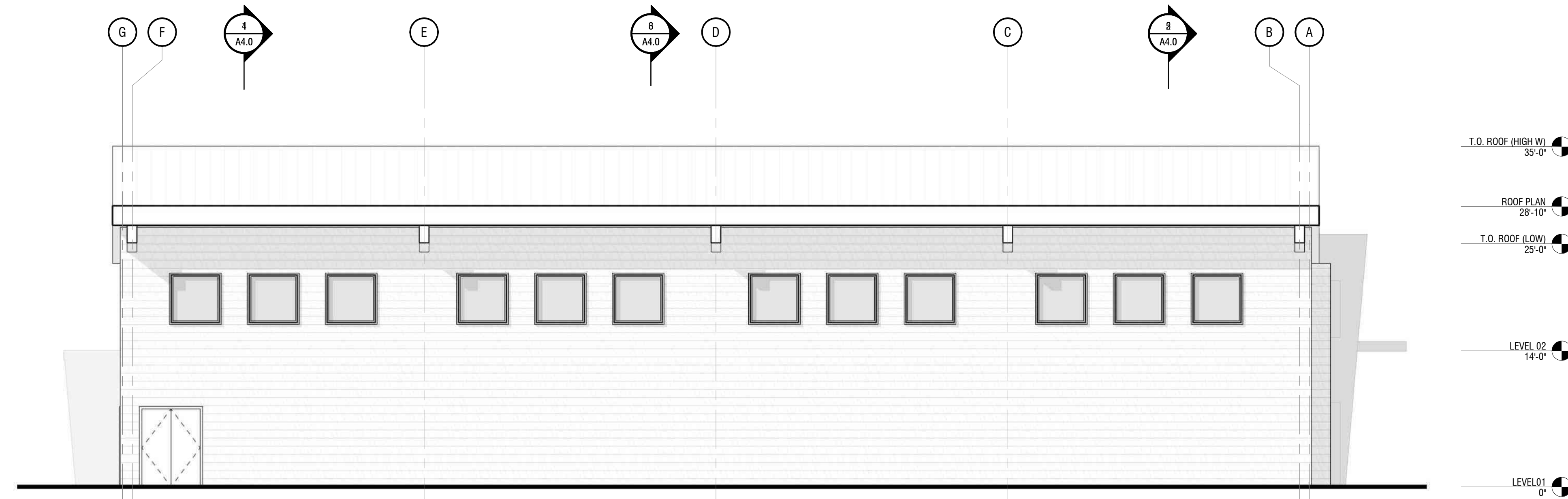


ELEVATION LEGEND

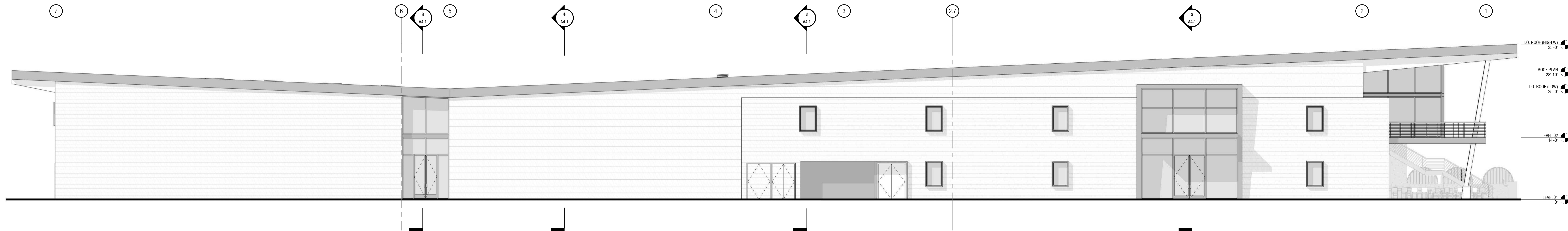
- FIBER CEMENT LAP SIDING, FOR COLOR, SIZE, AND FINISH, REFER TO OUTLINE SPECIFICATION SECTION 07-4646.01
- GYPSUM, FOR COLOR, SIZE, FINISH REFER TO OUTLINE SPECIFICATIONS SECTION 07-4646.02
- CONCRETE, FOR COLOR, SIZE, FINISH REFER TO OUTLINE SPECIFICATIONS SECTION 07-4646.03 AND 07-4646.04
- HORIZONTAL WOOD SIDING, REFER TO OUTLINE SPECIFICATIONS SECTION 07-4623



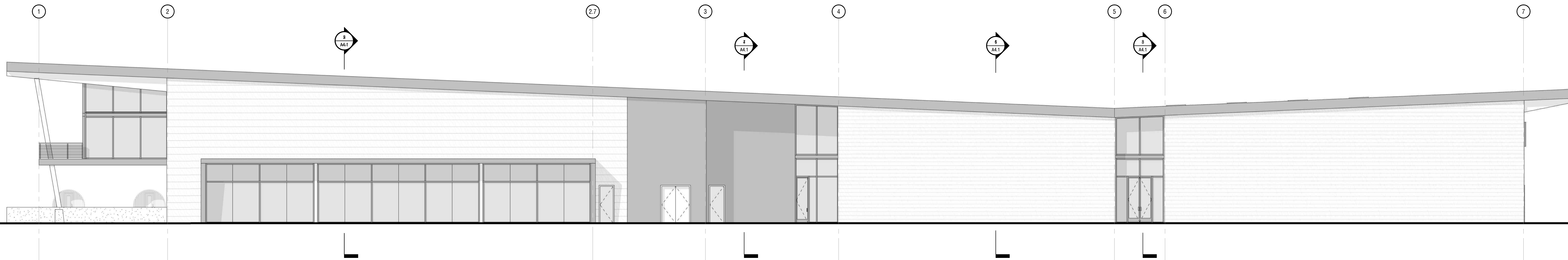
2 ELEVATION WEST  
1/8" = 1'-0"



1 ELEVATION EAST  
1/8" = 1'-0"



3 ELEVATION NORTH  
1/8" = 1'-0"



4 ELEVATION SOUTH  
1/8" = 1'-0"

NOT FOR CONSTRUCTION

SITE PLAN REVIEW  
THE SKYLINER CLUB  
SKYLINERS RD.  
BEND, OR 97702

DRWN BY:		JD
CHKD BY:		HS
NO.	DATE	SUBMITTAL
1	5.23.2024	PUBLIC MEETING

ARCHITECTURAL  
SITE PLAN